



# THE DISPATCH

Newsletter of the Matheson History Museum

## NEWS & FEATURES

A Note from our  
Executive Director

**PAGE 1-2**

Collections Spotlight

**PAGE 2**

Membership

**PAGE 3**

2024 Matheson Members

**PAGE 4**

Current Exhibitions

**PAGE 5-6**

Upcoming Events

**PAGE 7**

## A Note from Our Executive Director

On March 12, 1994 Sarah Hamilton Matheson cut the ribbon for the brand new Matheson Historical Center. In the 30 years since then, the Museum has evolved into the vibrant place we know today. We owe a great debt to the vision of our founding board of directors:

Mark V. Barrow, Sarah Hamilton Matheson, Marinus H. Latour, William King, Barbara Fearney, Meg Niederhofer, Joel M. Buchanan, Kenneth S. Davis, Helen Cubberly Ellerbe, Barbara Gans Gallant, E.L. Roy Hunt, Ralph B. Johnson, John Paul Jones, Carla M. Kemp, Murray Laurie, Jean Marshall, Les May, Terril A. Nell, Ben Pickard, Samuel Proctor, and F. Blair Reeves

Since the early days of Ham 'n' Eggs (the Historical Archives and Museum of Alachua County and Gainesville HAMAG) the Matheson has been blessed with a passionate and dedicated board, staff, volunteers, and members. Each person has left their fingerprints on the heart of the Museum. I invite each of you to join us this year as we celebrate our history with a brand new exhibition, Weaving a Community: 30 Years of the Matheson History Museum.

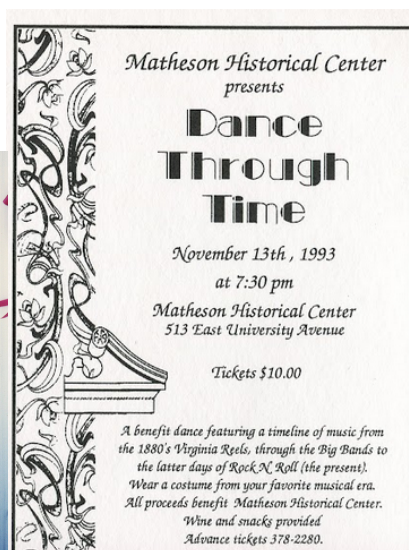
(continued on page 2)

(page 1 continued)

One of the very first events held at the Matheson, before it officially opened, was A Dance Through Time in November 1993. As we celebrate this year, we will dance back in time once more at our Sock Hop on March 9. Be on the lookout for more information about our 30th Birthday Party!

I have been with the Matheson, in a variety of roles, since 2015. In many ways, we have grown up together. I started as a volunteer at a spunky 21-year-old organization and am now privileged to lead a mature 30-year-old into the future. Here's to 30 more years of preserving and interpreting the history of our community!

With gratitude,  
Kaitlyn Hof-Mahoney  
Executive Director



## Collections Spotlight

### Coat of Arms



This copper coat of arms of the State of Florida was made for the 1885 Alachua County Courthouse building and was originally one of a pair displayed in the pediments over the entrances to the building. It shows in deep relief a Native American woman standing near the bank of a river, offering flowers of friendship to an approaching steamboat. In the background there is a coconut palm tree made with individual thin copper leaves, and a three-dimensional sun is shown rising over a low mountain range in the background. Along the bottom of the coat of arms is a banner that reads "In God We Trust." Today it hangs over the fireplace in the Main Gallery.

# Renew Today!

**All annual memberships are due as of January 1st, unless you joined/renewed since October 1, 2023.** You can easily renew online via our website:  
[mathesonmuseum.org/membership](https://mathesonmuseum.org/membership).

**Now is also a great time to switch to a sustainer membership.** Instead of an annual payment you can divide your membership dues up into monthly automatic payments (\$5 minimum). Instructions on how to become a sustainer member are in the blue box to the right.

What does your membership support?

- Continued care of our four historic buildings
- Permanent and temporary exhibits
- Collections care
- Expanded programs

Our staff and Board of Directors worked hard to improve our membership experience for 2024. New benefits include private tours, VIP days, discount on rentals, and more. Visit our website to view the complete list of benefits - [mathesonmuseum.org/membership](https://mathesonmuseum.org/membership).

All members enjoy:

- Members-only events and receptions
- Early access to registration for programs and events
- 20% discount in the museum gift shop
- Free tours of the Matheson House
- Recognition in the semi-annual newsletter
- Special member pricing for most ticketed events

# Become a Member!

## Sustainer Payment Plan

- Give monthly at any amount (\$5 minimum)
- You can register for an automatic monthly donation through Network For Good.
- Go to [www.mathesonmuseum.org/membership](https://www.mathesonmuseum.org/membership). Click the blue button at the bottom.
- When you reach the Network for Good membership page choose your monthly donation amount and then choose "Monthly" for donation frequency.

## Annual Payment Plan

- Student (with valid ID) - \$20
- Senior Individual (65+) - \$35
- Individual - \$45
- Family - \$70
- Historian - \$100
- Heritage Circle - \$250
- 1867 Society - \$500
- Sarah Matheson Society - \$1,000
- Lifetime - Cumulative Donations of \$5,000

# 2024 Members - Don't see your name? Renew today!

Leslie Alteri  
Gary Anglin  
Mary Anthony  
Troy Auffenberg  
Laurence Beaton  
Jim and Mary Brandenburg  
Kelli Brew  
Jane Brockmann  
Adrienne Burke  
Caroline Caton  
Jean Chalmers  
Madeline Davidson  
Robert Davis  
Martha Davis  
Nancy Deren  
Heather Dewer  
Cheryl and Paul Doering  
Rocky Draud  
Karen Eberly  
Christine Engels  
Jean Feingold  
Christina Flagg  
Carolyn Frederick  
Christy Freeman  
Janice Garry  
Sara Lynn Gibbs  
David Gold  
Carol Gordon  
Mr. and Mrs. Joe Haldeman  
Wade Hampton  
Peggy Henderson  
Susanne Hesse  
Carolyn Horter  
Kristin Joys  
Paul Kirk  
Karen Kirkman  
Donald Kunz  
Pam Lahiff  
Jean Lansford  
Joanna Leathers  
Michael Lee  
Ronnie Lovler  
Doug Mackey  
Carlos Maeztu  
Harry Mangle  
Lauranne McCraw  
Caryl McKellar  
Christy Merriman  
Sallie Monnin  
Annie Morien

Daryl Mullee  
Mary Munson  
Reva Pachefsky  
Kathleen Pagan  
Anne Pierce  
Anna Rahman  
Elisabeth Renner  
Helene Rhine  
Ann Rizzo  
Camille Robinson  
Jane Roy  
Becca Ryneerson  
Raul Sanchez  
Marilyn Santos  
Beverly Saviello  
Fred Schirmer  
Michael Schwartz  
Jan Scott  
Ann Smith  
David Snedeker  
Felipe Soto  
Marcia Storch  
Mike Thompson  
Ellen Thoms  
Fran Towk  
Linda Tyler  
John Vanderhoek  
Susan Williams  
Ashley Wood

**Sustainer**  
Mark Barrow, M.D.  
Eleanor Briseno  
Judyth Dawson  
Tina Fields  
Donna Foust  
Suzanne Gotro  
Sheila Payne and  
Paul Ortiz, Ph.D  
Kim Popejoy  
Jason Stanford  
Luis Tirado  
Samuel Welker  
Greg Young

**Historian**  
Fred Awbrey, Jr.  
Pam Carpenter  
Alison Conner  
Carolyn Freeman

Laurel Freeman  
Daniel Hayman  
Kristin Hof  
Kurt Kent  
Carol McCusker  
Louise Newman, Ph.D.  
Lisanne Renner  
Philip Robinson  
James and Susan  
Roland  
Alyce Schweyer  
Culpepper  
Jeffrey Shapiro  
Ben Smith  
Barbara Wingo  
Susan Wright

**Heritage Circle**  
Alachua Audubon  
Society  
Jeanne and Hunt Davis  
Kenneth Nunn  
Marilyn Tubb

**1867 Society**  
Kathleen Hayman  
Carl Hof-Mahoney  
Jon Rehm, Ph.D.  
Brenda Robinson

**Sarah Matheson  
Society**  
Nancy Baldwin  
James Galloway  
Jeff Montgomery  
Julie Perry

**Lifetime**  
Elizabeth Alsobrook  
Barbara Anderson  
Karen Arendell  
Melanie Barr  
Mark Barrow, M.D.  
Sandy Burnett  
John J. Canova, Jr.  
Joseph Cauthen, M.D.  
Don Caton, M.D.  
David Chadwick  
Jean Chalmers  
Mae Clark

Charles Cobb, Ph.D.  
Gladys Cofrin  
Don and Sandy  
Davis  
Sheila Dickison  
Charles and BarBee  
Geiger  
Michael J. Gengler  
Sam and Deborah  
Goforth  
Norman Hommen  
E.L. Roy Hunt  
Marcia Isaacson  
Carl and Margaret  
Johnson  
Dianne Junior  
Linda and Clayton  
Kallman  
Cal King  
Murray Laurie  
Linda and Ken  
McGurn  
Jeffrey Meldon  
Robert Mounts  
Rebecca Nagy, Ph.D.  
Meg Niederhofer  
and Robert  
Hutchinson  
Joakim Nordqvist  
Mary Pardue  
Julie Perry  
Davis Rembert  
Larry Reynolds  
Bonnye and Larry  
Roose  
Joe Rush  
Mickey Singer  
Anita Spring, Ph.D.  
Carol Squitieri  
William Stasiewicz  
J. Thomas Touchton  
John T. Touchton, Jr.  
Marilyn Tubb  
Dr. & Mrs. Frans Van  
Haaren  
David Wilson  
Steve and Raamy  
Winfrey



# Current Exhibitions

We Are Here: Stories from Multilingual Speakers in North Central Florida - **LAST DAY SATURDAY, FEBRUARY 10**

---

Immigrant inclusion requires us to think about languages other than English, and to listen to the stories that people carry through their languages and their cultures. "We are Here" highlights stories from people who speak multiple languages in North Central Florida.

Through visual collages that centralize cultural images, "We Are Here" illustrates the immigration journeys of our North Central Florida community through stories that hold power in multiple languages. These stories include examples of successes, struggles, hopes, injustices, and dreams of a more inclusive and just community. The goal is to showcase these stories, make visible the language diversity present in our community, and advocate for all of our neighbors' right to access information in their preferred languages.



Return to Forever: Gainesville's Great Southern Music Hall  
**LAST DAY SATURDAY, MAY 4**

---

Between 1974 and 1978, the top concert venue in Gainesville was the Great Southern Music Hall, located inside the historic Florida Theatre at 233 West University Avenue. Transformed by Jeffrey Meldon and Jim Forsman, the Great Southern played host to a who's who of prestigious performers including Jimmy Buffett, Ray Charles, Muddy Waters, Bob Seger, Steve Martin, Ike and Tina Turner, John Prine, the Count Basie Orchestra, and dozens more.

This impactful exhibit showcases dozens of John Moran's performance photos from his two years as the Great Southern Music Hall house photographer. Also featured is a display of Bo Diddley artifacts.

Thank you to Jeffrey Meldon and Meldon Law for sponsoring this exhibition!



# Upcoming Exhibitions

## Weaving a Community: 30 Years of the Matheson History Museum Opening Wednesday, February 28

---

In the late 1980s, Gainesville had a well-documented and researched history, numerous nationally-recognized historical sites, and multiple civic organizations centered around the preservation and proliferation of local history. What it did not have was a centralized place dedicated to that rich local history, where the accumulated knowledge and artifacts of the last two centuries could be housed and protected. This year, the Matheson History Museum will commemorate its 30th Anniversary of meeting that need.

To celebrate, “Weaving a Community” will take an all-encompassing view of the Matheson's history and its origins. The exhibition reveals the museum's roots through the history of the Matheson family, the American Legion Hall, and the wider civil society. It presents our history in an unbroken tapestry, revealing interesting and intertwined threads that tie the museum, the history of Gainesville, and our community together.

## Voices and Votes: Democracy in America Local History exhibit opens Wednesday, May 15 Smithsonian travel exhibit opens Saturday, July 20

---

“Voices and Votes: Democracy in America” is part of Museum on Main Street, a unique collaboration between the Smithsonian Institution Traveling Exhibition Service (SITES), state humanities councils across the nation, and local host institutions.

Through a selection of photographs, objects, film, audio and interactives, “Voices and Votes” takes a broad look at the nearly 250-year-old American experiment of a government “of, by and for the people.” From the revolution and suffrage, to civil rights and casting ballots, everyone in every community is part of this ever-evolving story—the story of democracy in America. Exhibition sections explore the origins of American democracy, the struggles to obtain and keep the vote, the machinery of democracy, the right to petition and protest beyond the ballot and the rights and responsibilities of citizens.

The local history exhibit will specifically cover the history of Alachua County's elections, elected officials, suffrage and civil rights, and more.

# Upcoming Events

## **The Pagoda: A Lesbian Community by the Sea**

Author Talk with Rose Norman

February 11, 4pm

## **Finding Florida - Crossing the Suwannee River in the 1800s - Early Ferries, Bridges & Trestles**

with Ken Sulak, Ph.D.

February 24, 4pm

## **My Withered Legs and Other Essays**

Book Launch with Sandra Lambert

March 3, 2pm

## **30th Anniversary Sock Hop**

March 9, 6pm-8pm

Paid Tickets

## **Tracing Florida Journeys**

Author Talk with Leslie Kemp Poole, Ph.D.

April 6, 4pm

## **Just Call Me Rae**

Author Talk with Ann Weimer Moxley

April 24, 7pm

## **Once Upon a Time in Florida: Roots and Rivers**

with Jacki Levine, Jack Davis, and Cynthia Barnett

Sponsored by Florida Humanities

May 1

6:30pm Reception

7pm Panel

## **Floridiana Show**

May 4

10am-11am Museum Members Only

11am-4pm General Public

\$5 Admission, Children 14 and under free

Members free

**\*All programs are free (unless otherwise stated) but require pre-registration.**

# Second Saturdays at Sweetwater

This spring we are continuing our series of outdoor programs in Sweetwater Park - the second Saturday of the month, January-April.

Each program will take place in Sweetwater Park, located directly behind the Matheson.

## **Darren Burgess Jazz Collective**

January 13

2:30pm - 4pm

## **Yoga in the Park with Gaya Prabhakaran**

February 10

2pm-3pm

## **Yoga in the Park with Gaya Prabhakaran**

April 13

2pm-3pm

We are excited to partner with #UNLITTER for a yoga class on the front lawn of the historic Matheson House. All levels and abilities are welcome. Please bring your own yoga mat or towel to use.

## Follow us on social media!



@mathesonhistorymuseum



@mathesonmuseum



@mathesonmuseum



Matheson History Museum

Website: [www.mathesonmuseum.org](http://www.mathesonmuseum.org)

**Anytime**  
CAR WASH

at Chevron Hunter's Crossing  
5221 NW 43rd Street  
Gainesville, FL 32606  
(352) 377-4355

Florida's **ONLY** 100% Solar Powered Car Wash

**Buy 5**  
"WORKS" washes  
**Get 5 FREE**  
using our club card

**Car Wash Club Card**  
Chevron at  
Hunter's Crossing  
5221 NW 43 Street  
Gainesville, FL 32606  
352.377.4355

Thank you to our  
corporate  
sponsors!



**MELDONLAW**  
*Won't Back Down*



Our exhibitions and programs are sponsored in part by: Visit Gainesville - Alachua County, FL; The City of Gainesville; and the Department of State, Division of Arts and Culture, the Florida Council on Arts and Culture, and the State of Florida.



**City of Gainesville**



RETURN SERVICE REQUESTED

NON-PROFIT ORG.  
US POSTAGE PAID  
GAINESVILLE, FL  
PERMIT #245

**MATHESON HISTORY MUSEUM**  
**513 E. UNIVERSITY AVENUE**  
**GAINESVILLE, FL 32601**